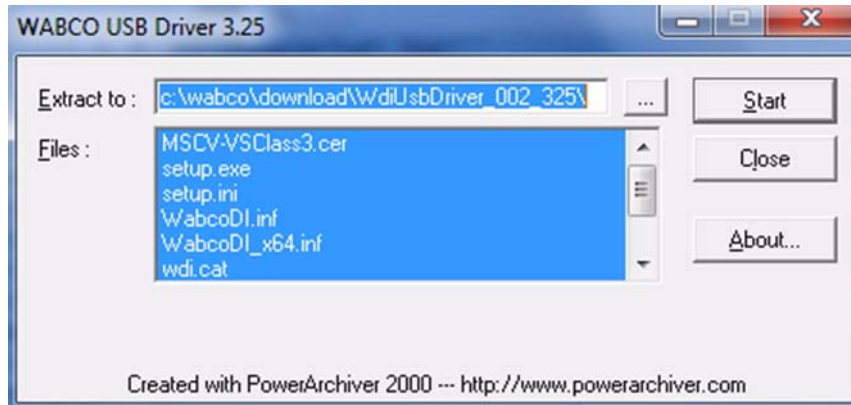


Driver installation

For installation and de-installation of driver you need admin rights.

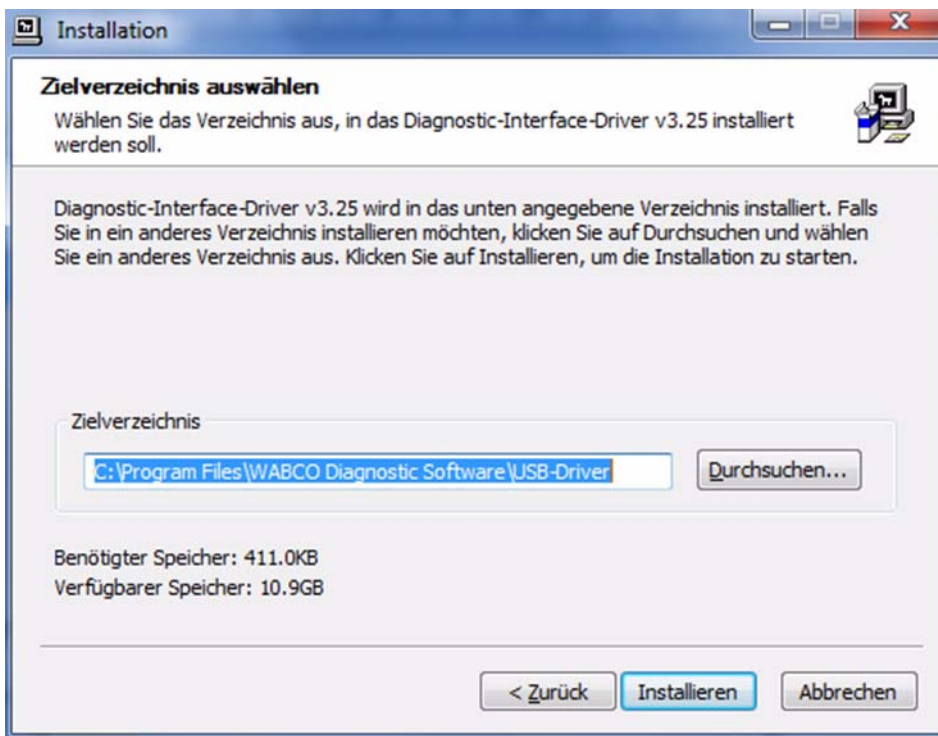
- Start file *WdiUsbDriver_002_325.exe*



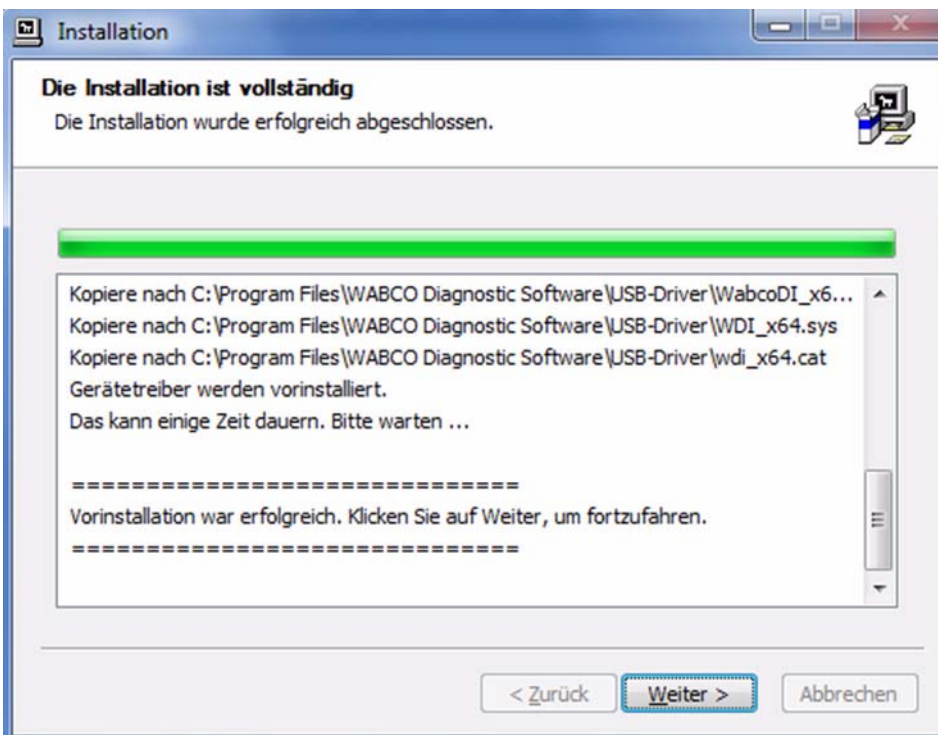
- Click on *Start*.



- Click on *Next*.



- Click on *Install*.



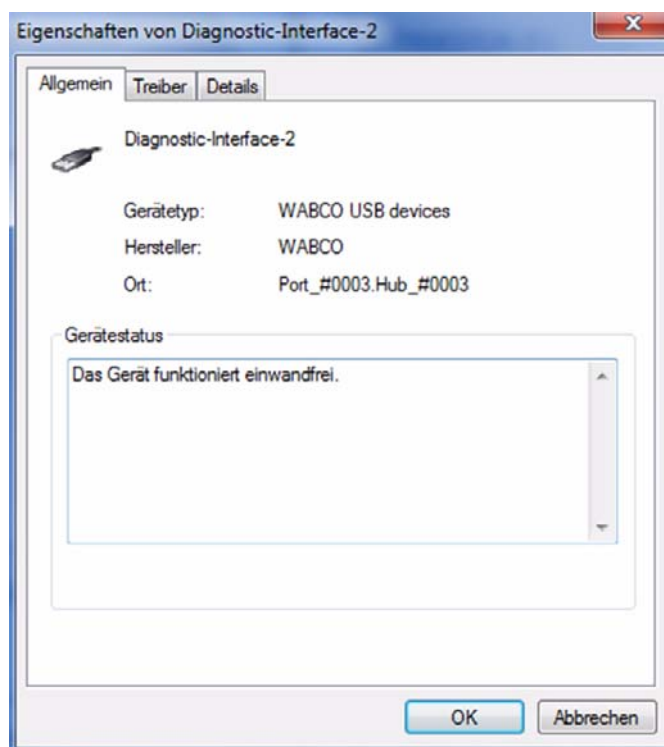
- Click on *Next*.
- Click on *Finish*.

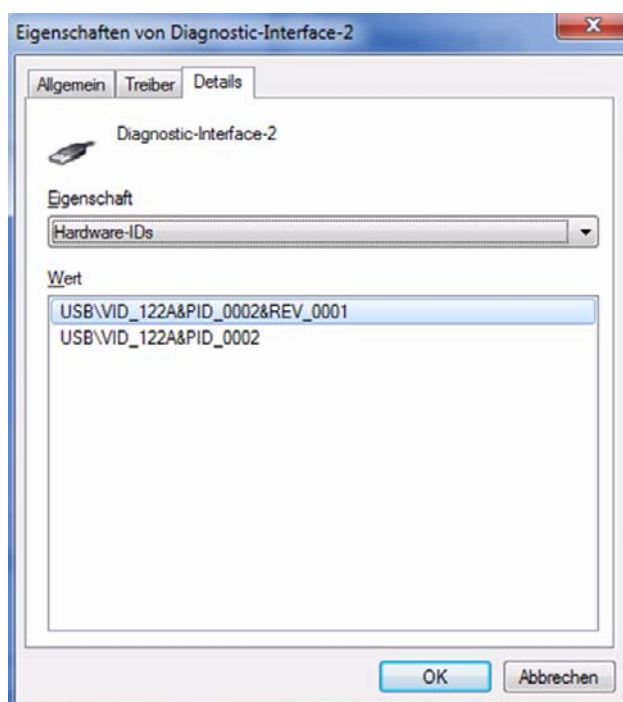
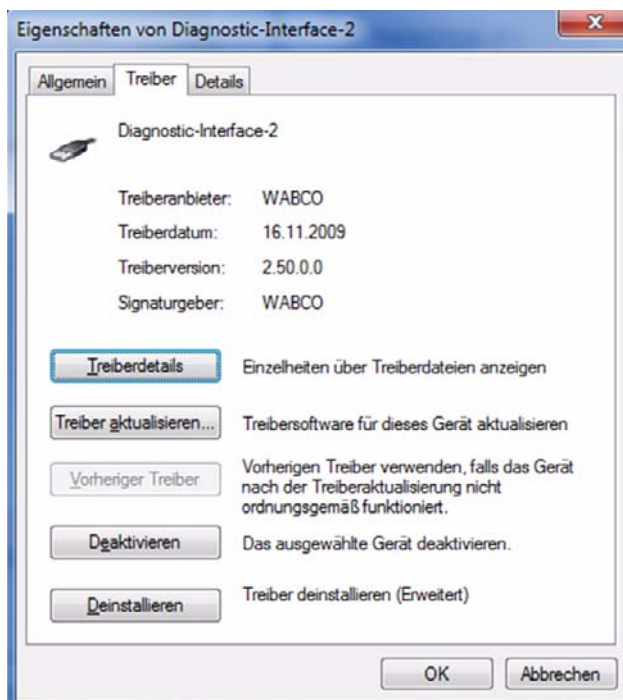
While connecting the diagnostic interface for the first time, the driver will be installed.

Checking driver when having problems

- Press key combination *Windows key + Break* for calling up window *System properties*.
- Click on tab *Hardware*.
- Click on *Device Manager* button.

DI-2 example under Windows 7 64 bit: Use driver WDI_x64.sys (from V2.50) under Windows 7.





Remove USB driver

- Call up file *Uninstall.exe*.
This file is located under *C:\Programm Files\WABCO Diagnostoc Software\USB-Driver*