

Trailer Telematics | Shortcut to your trailer



- Transport **SAFETY** and **SECURITY**
- Monitoring, reporting and **ANALYZING** vehicle **DATA**
- Fleet **MAINTENANCE** operating costs **OPTIMIZED** and reduced

Trailer Telematics – The easiest connection between you, your



Today's transport business is more demanding than ever. Everyone in the market tries to position themselves best for the future.

With the WABCO Trailer Telematics solution you will establish a solid, future-oriented basis and be well prepared for tomorrow's business challenges.

Telematics contributes to cost reduction and improves efficiency in many areas. The freight agent, the logistics manager, the loading staff, the driver and the workshops all benefit from a telematic system.

HOW DOES A TELEMATIC SOLUTION HELP ME?

- Profitability is increased by several factors. WABCO Trailer Telematics is able to take an active role, either by reducing the operating costs or by increasing efficiency.

- The dynamics of today's order management require high transparency both in availability and monitoring of vehicles. It is essential to know which vehicle is ready for use and where it is located. WABCO Trailer Telematics clearly shows all trailers and their status – for example, in an overview chart.

- Monitoring load and conditions – such as the temperature – are important to the transport manager as well as to ensure the faultless condition of the vehicle.

- Improve customer satisfaction. It is not only the „Hard Facts“ that count; often the „Soft Facts“ are the cherry on the cake. WABCO Trailer Telematics integrates the owner of the load into the processes, increasing transparency and confidence.

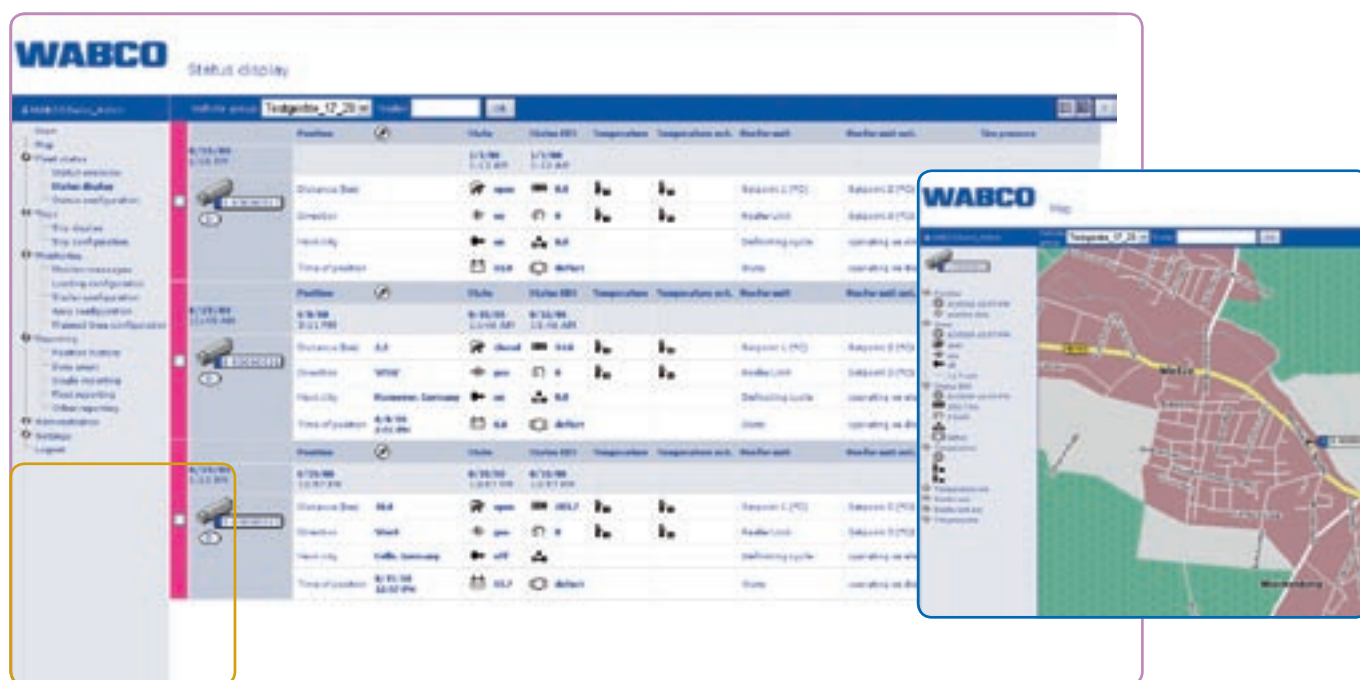
- Communication and handling of data is important today. Success depends on the availability of information. WABCO Trailer Telematics delivers the information quickly and accurately to where it's needed and optimizes the processes.

- The loss of vehicle and load always has far-reaching consequences. WABCO Trailer Telematics has a preventive effect since it acts as a deterrent, and also helps in finding the trailer if worst comes to worst.

WHAT BENEFITS WILL WABCO TRAILER TELEMATICS BRING ME?

- Single solution for all compatible trailer types – original equipment and retrofit.
- WABCO Trailer Telematics solution can be customized to meet specific fleet needs – we offer the most cost-effective combinations depending on requirements.

trailer and its load



- European wide flat rate communication fees that allow you to control and plan your costs.
- All components conform to highest ISO and EMC standards for increased reliability and reduced down time.
- Flexible and future-oriented solution with the latest GPS technology and with the LIN-bus allowing the system to be upgraded.
- Highly secured and tamper-free due to integrated antennas (GPS & GSM) – no visible antennas.
- Optimum system utilisation – deep integration into the latest WABCO Trailer Systems, such as Trailer EBS, IVTM and BVA.
- Guest access for third parties – status information can also be seen by the customer or the rental manager.

- Monitor a wide range of key trailer performance metrics such as vehicle data and information from the Operating Data Recorder (ODR).
- Integration of information into the own back office-software – no isolated application.
- Flexible adaptation to new conditions – configuration of the system remotely.
- Extensive and highly qualified and trained WABCO engineers to implement WABCO Trailer Telematics solution – support from a global infrastructure and WABCO University.
- Worldwide service by the WABCO Service Network – support wherever and whenever it is needed.

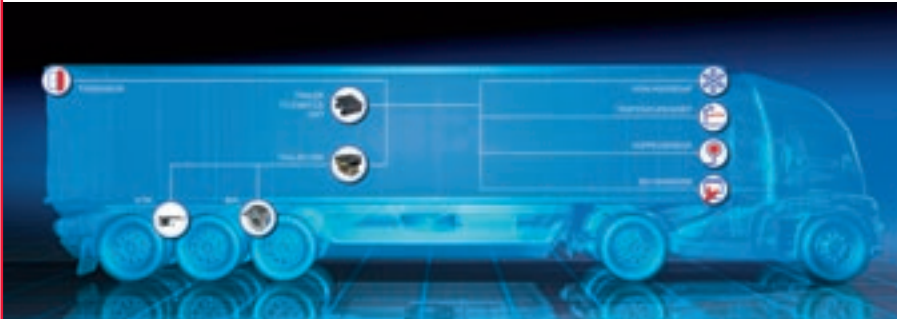
SERVICE, PACKAGES & OPTIONS

- Internet-based, standardised and intuitive user interface
- Management-by-Exception – warning in exceptional cases
- Information at regular intervals or on request
- Access to the data via internet or by message to your mobile phone
- Multi-client system – makes data available for your customer
- European wide range of application

MAIN INFORMATION AVAILABLE

- Status of the Trailer EBS
- Door status
- Coupling status
- Axle load
- Alarm status
- Location and driving direction
- Ignition
- Battery status
- Temperatures

Take a look at www.WABCO-Telematics.com



- Reefer unit including defrosting cycles and set points
- Tire pressures
- Start and end position of a trip
- Duration and mileage of a trip
- Further trip details
- Messages for door, coupling, temperature and set points
- Watchboxes

MAIN ANALYSIS AVAILABLE

- Analysis of fleets or single trailers
- Vehicle diagnosis
- Vehicle status
- Position history
- Temperature history
- Trip history

VEHICLE COMPONENTS

- Standardised components for the application in all trailer types.
- Usable for original equipment and retrofit.
- Designed for the harsh demands of commercial vehicle operations.
- Integrated and protected GPS and GSM antennas.

- Intelligent power management and high end accumulator, designed for extensive stand-by periods in parked conditions.
- Upgradeable LIN bus based sensor interface
 - for sensing the door status
 - for sensing the coupling status
 - to the reefer unit
 - to the temperature recorder and
 - future sensor application.
- Interfaces to trailer systems
 - Trailer EBS
 - Tire pressure monitoring (IVTM)
 - Brake lining wear indicator (BVA)
- Easy maintenance free and non-contact door sensors.
- Integrated end-of-line test in connection with the WABCO Trailer EBS.
- Intelligent cable layout for perfect installation.

www.wabco-telematics.com

WABCO Vehicle Control Systems is one of the world's leading providers of electronic braking, stability, suspension and transmission automation systems for heavy duty commercial vehicles. Customers include the world's leading commercial truck, trailer, and bus manufacturers. Founded in the U.S. in 1869 as Westinghouse Air Brake Company, WABCO was acquired by American Standard in 1968 and spun off in 2007. Headquartered in Brussels, Belgium, WABCO employs more than 7,700 people in 31 countries worldwide. In 2007, WABCO's total sales were \$2.4 billion. WABCO is a publicly traded company and is listed on the New York Stock Exchange with the stock symbol WBC.

When buying a WABCO product, please check that it contains the typical WABCO marks (particularly on the packaging, labels and identification plate) as evidence that it is an original WABCO part. In case you have any doubts, please contact WABCO or an authorized WABCO partner.

www.wabco-auto.com

Distributor stamp

WABCO