

# ESCsmart™

ELECTRONIC STABILITY CONTROL



**WABCO**

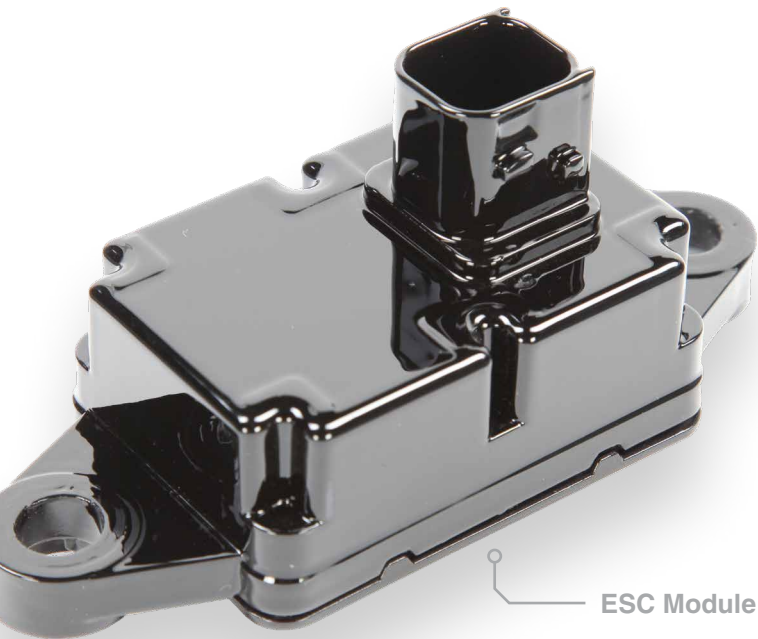
Mobilizing Vehicle Intelligence

## TECHNICAL FEATURES AND INNOVATIONS

- Active safety system supports the driver to keep the truck stable during critical dynamic driving maneuvers
- Continuously monitors the vehicle's roll-over threshold and activates to decelerate the vehicle when threshold is exceeded
- Assists directional control in slippery road conditions or when taking an evasive action, and reduces the risks of a jack-knife and drift out through selective braking of the tractor and trailer
- Intelligent self-adapting capabilities to changing vehicle and load characteristics deliver outstanding control quality



Steering  
Angle Sensor



ESC Module

## VALUE TO FLEET CUSTOMERS

- Addresses a broad range of accident causes to increase overall safety
- Accident avoidance helps to
  - Maximize vehicle uptime
  - Avoid accident-related cost
  - Deliver cargo safely and on time to ensure customer satisfaction
- Supports drivers in very stressful driving situations
- Improves driver effectiveness across all levels of experience

## VALUE TO OEM CUSTOMERS

- Engineered to fulfill ESC legislations for commercial vehicles worldwide
- Seamlessly integrates with WABCO's product portfolio of Advanced Braking Systems
- ESCsmart™ adapts to the broadest range of vehicles on the market
- Delivers exceptional end-of-line efficiency for OE customers
- Enables shortest possible time-to-market
- Offers significant savings on logistic costs by reducing parts inventory
- Experienced local engineers support customers from application over homologation to SOP

## ROLL STABILITY CONTROL



without ESC



with ESC

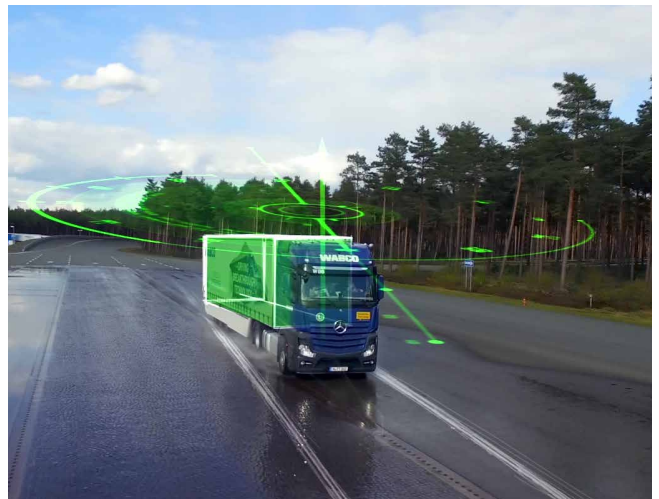
## HELPS TO PREVENT VEHICLE ROLL-OVER

- Determines the vehicle's behavior around its longitudinal axis
- Automatically intervenes in situations where vehicle stability enters a critical phase
- Actively controls the engine and the service brakes of both truck and trailer

## YAW CONTROL



without ESC

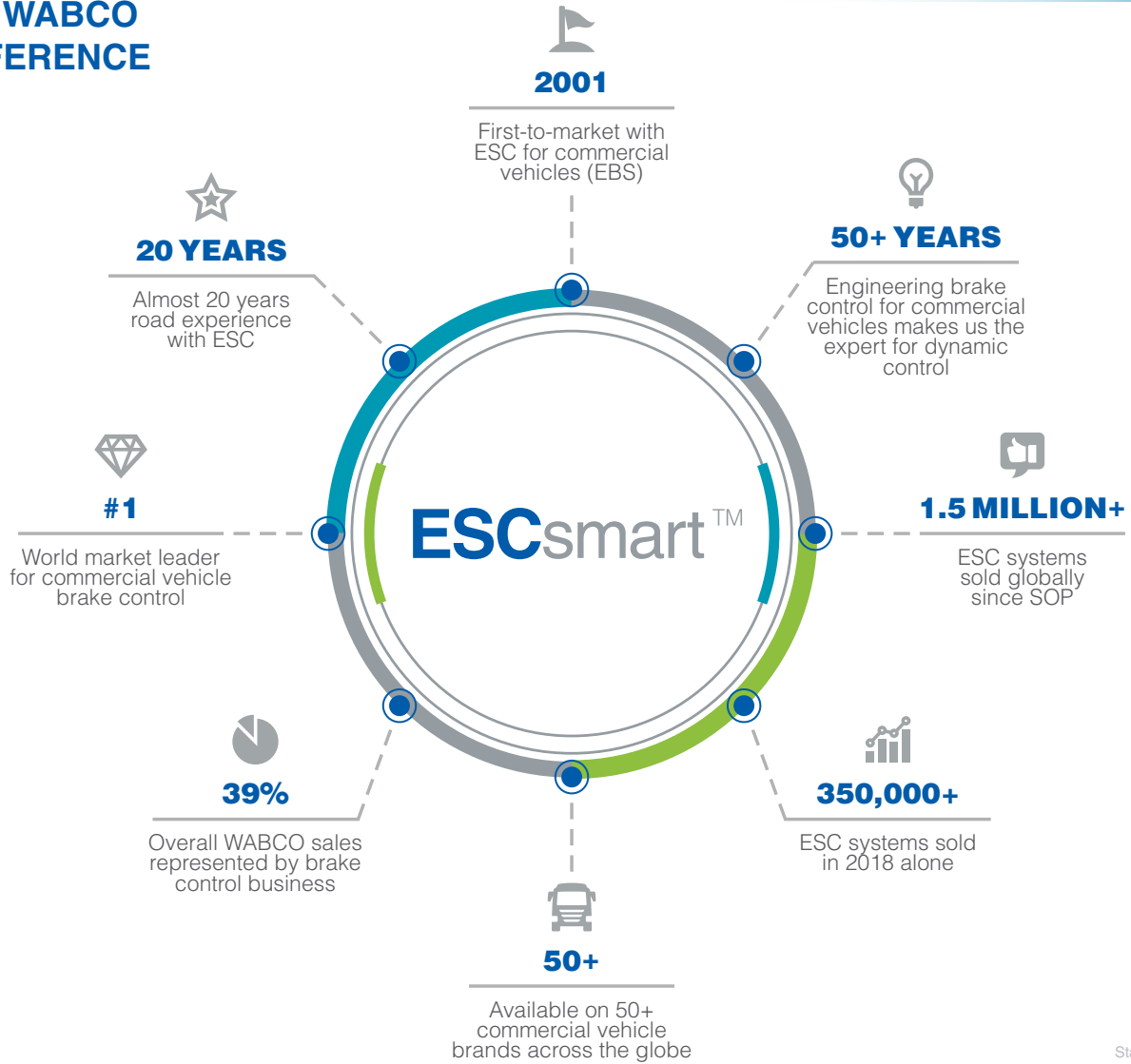


with ESC

## HELPS TO AVOID SKIDDING AND JACKKNIFING

- Determines the vehicle's behavior around its vertical axis
- Automatically intervenes in situations where vehicle stability enters a critical phase
- Autonomously reduces engine torque, selectively applies the brakes of the tractor and brakes the trailer

# THE WABCO DIFFERENCE

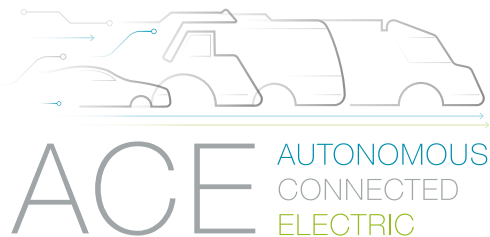


Status: 08.2019

For further details contact your WABCO representative or visit us at [www.wabco-auto.com](http://www.wabco-auto.com)

## About WABCO

WABCO (NYSE: WBC) is a leading global supplier of technologies and services that improve the safety, efficiency and connectivity of commercial vehicles. Originating from the Westinghouse Air Brake Company founded nearly 150 years ago, WABCO continues to pioneer breakthrough innovations to enable autonomous driving in the commercial vehicle industry. Today, leading truck, bus and trailer brands worldwide rely on WABCO's differentiating technologies, including advanced driver assistance, braking, steering and stability control systems. Powered by its vision for accident-free driving and greener transportation solutions, WABCO is also at the forefront of advanced fleet management systems that contribute to commercial fleet efficiency. In 2018, WABCO reported sales of \$3.8 billion and more than 16,000 employees in 40 countries. For more information, visit [www.wabco-auto.com](http://www.wabco-auto.com).



**WABCO**

Mobilizing Vehicle Intelligence